

1 PLAN

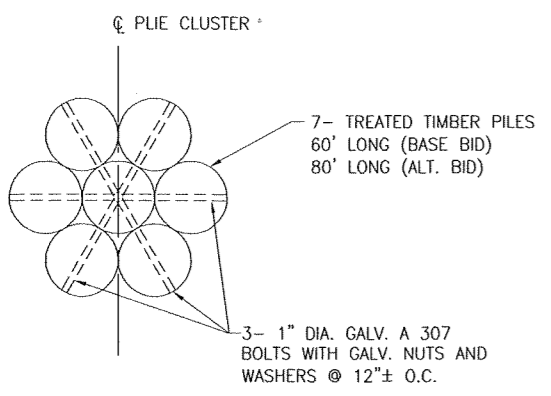
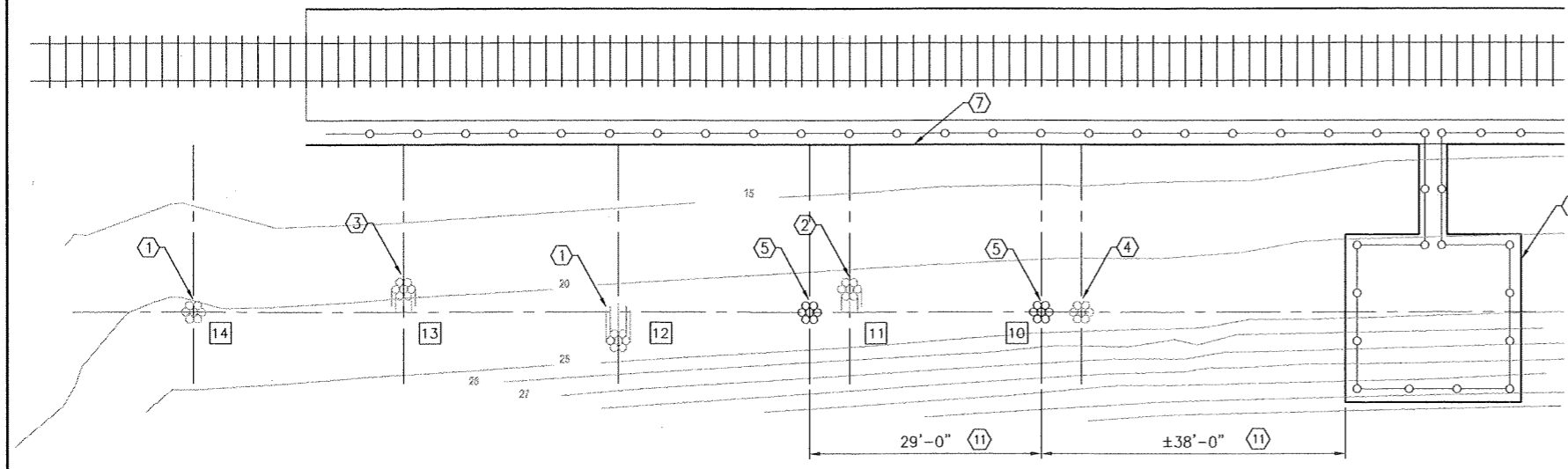
SCALE: 3/32" = 1'-0"

NOTES:

- [X] - PILE CLUSTER NUMBER DENOTES DEPTH TO MUDLINE FROM WATER SURFACE AS DOCUMENTED IN A SHORELINE SURVEY COMPLETED IN APRIL 2010 PRIOR TO THE DECEMBER 2010 CLUSTER PILE INCIDENT.

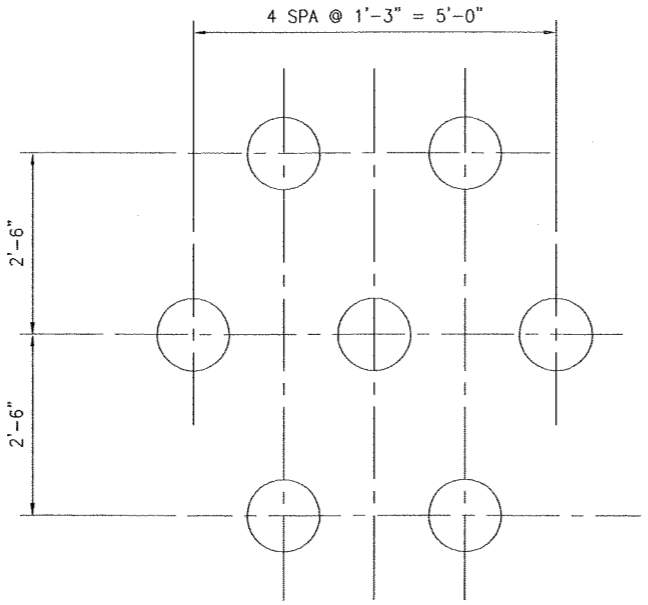
KEYED NOTES

- ① EXISTING PILE CLUSTER TO REMAIN IN PLACE
- ② DAMAGED PILE CLUSTER TO BE REMOVED
- ③ DAMAGED PILE CLUSTER TO REMAIN IN PLACE
- ④ ESTIMATED PILE CLUSTER LOCATION MARKED BY FLOAT TO BE REMOVED
- ⑤ PROPOSED PILE CLUSTER
- ⑥ CONCRETE PLATFORM
- ⑦ EDGE OF BRIDGE
- ⑧ EDGE OF BULKHEAD
- ⑨ ESTIMATED SINGLE PILE LOCATION MARKED BY FLOAT TO BE REMOVED
- ⑩ ESTIMATED PILE CLUSTER LOCATION - PILE CLUSTER LOCATION TO BE FIELD DETERMINED BY CONTRACTOR AND REMOVED
- ⑪ DIMENSIONAL CONTROL PROVIDED FOR NEW PILE CLUSTER INSTALLATIONS ARE APPROXIMATE. SLIGHT VARIATIONS TO THE LONGITUDINAL DIMENSIONAL CONTROL CAN BE ACCOMMODATED BUT TRANSVERSE ALIGNMENT OF CLUSTER PILES SHALL BE CLOSELY MAINTAINED. COORDINATE WITH THE ENGINEER PRIOR TO ALL NEW PILE DRIVING OPERATIONS.
- ⊙ NOTE REGARDING DEBRIS REMOVAL: CONTRACTOR SHALL BE RESPONSIBLE FOR REMOVING MUDLINE PILE DEBRIS INCLUDING THAT DEBRIS THAT MAY HAVE BEEN SILTED OVER SINCE THE INCIDENT. FRACTURED VERTICAL PILING EXTENDING BENEATH THE MUDLINE DOES NOT NEED TO BE REMOVED.



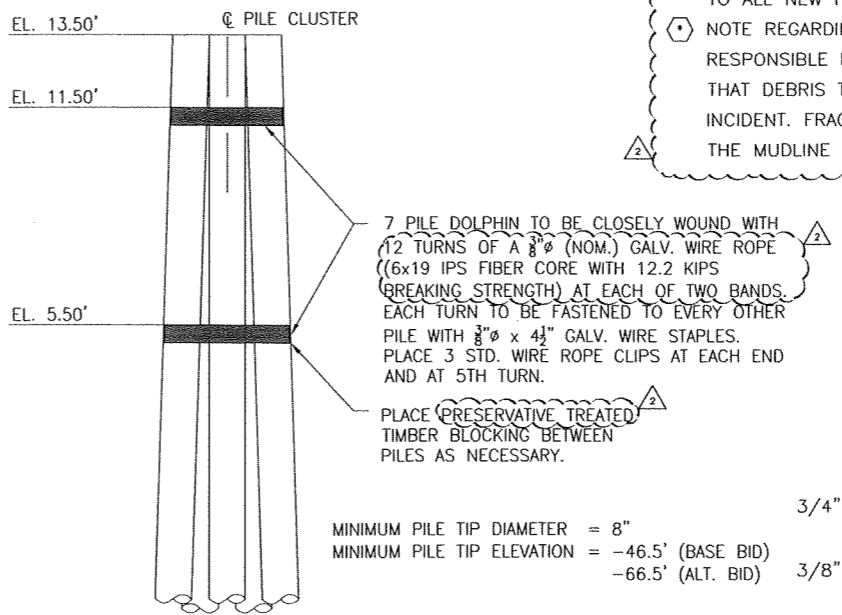
2 PILE PLAN AT TOP

SCALE: 3/4" = 1'-0"



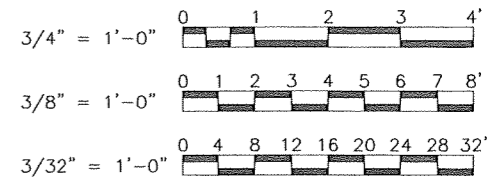
3 DRIVING PLAN AT APPROX. EL. -30.0'

SCALE: 3/4" = 1'-0"



4 7 PILE DOLPHIN ELEVATION

SCALE: 3/8" = 1'-0"



**PORT OF PORT ARTHUR
CLUSTER PILE REPAIRS (2011)
CLUSTER PILE PLAN AND DETAILS**

SCALE: VARIES
DESIGNED BY: W. SCOTT
DRAWN BY: J. SAVAGE
CHECKED BY: J. JELINEK
APPROVED BY: J. JELINEK
PROJECT NO: 170-10276-012
NO DATE REVISIONS APPR

SCALE: VARIES
DESIGNED BY: W. SCOTT
DRAWN BY: J. SAVAGE
CHECKED BY: J. JELINEK
APPROVED BY: J. JELINEK
PROJECT NO: 170-10276-012
NO DATE REVISIONS APPR